



S6BW

Premium B/W HCU with
Color Upgradable



S6BW is a genius of black and white HCU (Hand Carried Ultrasound). She fully expresses the character of “Small yet powerful function, light weight yet uncompromising ability” . The S6BW is designed to be an easy-to-use and feature-rich ultrasound system, so it can not only fulfill the traditional application work, but also the emerging applications, such as anesthesia, ICU, vascular, breast and emergency.

Small and Convertible

In a compact and ergonomic architecture, S6BW delivers excellent image quality and performance. Combined with a unique trolley, the system is instantly converted from a full-featured HCU to a highly mobile cart-based system with a wide range of applications. Featuring an in-built Footprint Switch jack, an in-built thermal printer jack and standard two transducer sockets, S6BW offers doctors full confidence and convenience wherever it goes.

Super 2D Image Quality with PW/HPRF Doppler

With an extra large viewing region of 160 mm*160 mm, the 15" LCD monitor makes diagnosis easier; Fully Digital Beamformer, THI (Tissue Harmonic Imaging) and Five Variable Frequency lead outstanding image quality. This system also supports PW/HPRF Doppler, which extends the applications to more fields.



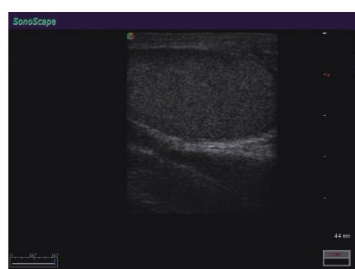
Liver Vein



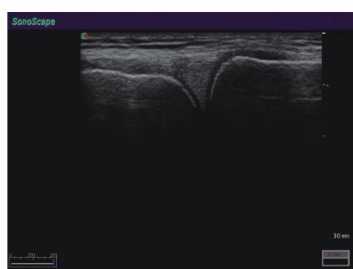
Fetal Artery arch



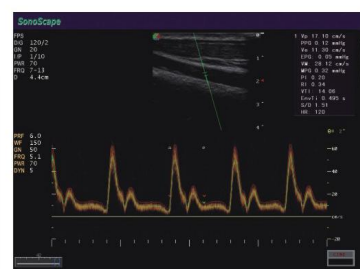
Ovary



Testicle



Finger Joint



Standard PW Doppler



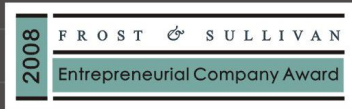
Compact yet Uncompromising Ergonomics

The S6BW is compact, but this doesn't mean compromised ergonomics or performance. A well designed control panel puts all the frequently used operations close at hand and S6BW's all-in-one design concept means it offers maximum convenience even travelling with two transducers and a bottle of gel.

Easy to Use yet a Feature- Rich Ultrasound System

The system is featured with Intuitive operations consisting of one-key image optimization function, full patient database solutions including DICOM3.0, USB2.0, and HDD, and direct connectivity to external PC for image transfer. Standard two active transducer sockets are also readily available for panoramic transducer family: convex, sector, linear, transvaginal, transrectal, bi-plane and intraoperative.





ISO 13485



Quote from the CEO of SonoScape Co., Ltd.

“ SonoScape is a Chinese leader specializing in developing and manufacturing cutting-edge color Doppler ultrasound systems and ultrasound transducers. Our corporate mission is to deliver revolutionary high-value products and services that improve healthcare worldwide. As the only China Top Brand in the medical industry recognized by General Administration of Quality Supervision, Inspection and Quarantine of the People's Republic of China, SonoScape will be continuing providing the highest quality ultrasound systems and services at the most competitive prices for our customers worldwide.”

Mr. Jinzhong Yao

Quote from the analyst of

FROST & SULLIVAN

“ SonoScape Co. Ltd. has exhibited exceptional entrepreneurial capabilities in developing S8 - the portable colour Doppler System. The advanced 4D capabilities of the ultrasound unit are customised for the high-end European market and yet available at much affordable prices. The company's priority in maintaining high levels of quality in its product lines is well supported by the negligible after-sales costs associated with its ultrasound systems. Also with the launch of SSI-1000, the hand carried ultrasound with multiple clinical applications; SonoScape has made significant strides towards establishing itself as a global medical equipment manufacturer.”

Mr. Krishanu Bhattacharjee

SonoScape

Представител за България
Илан Медицинска Апаратура ООД
гр. Варна, ул. Кирил Шиваров 9 Б
тел. 0700 17373
факс 052 612258
e-mail: office@sonoscape.bg
www.sonoscape.bg